

# ONTARIO SPCA AND HUMANE SOCIETY

## HOW TO BUILD A FERAL CAT SHELTER



Most of these materials, if not all, should be able to be purchased from your local home building supply store.

### Materials Needed:

- Rubbermaid tote (we use a 68L size and it doesn't need to be a Rubbermaid brand)
- ¾ inch Durofoam sheet (One 4 x 8 sheet should make about 3 shelters)
- 1 piece of 6" black corrugated tubing (an alternative would be to use a 1L ice cream container and cut the bottom out of it)
- 1 roll of black gorilla tape (2" thick)
- 1 roll of grey duct tape
- Exacto knife
- Measuring tape
- Sharpie Marker
- Straw
- Laminated information sheet (to be taped to top of tote indicating that "this shelter is provided for a managed cat colony. Please do not disturb" etc. You can also include contact information. Having this laminated would be beneficial)

**Additional Tools:** Jigsaw or circulating saw

Laminator (or take to Staples etc. to be laminated)

**Procedure:**

- 1) Measure the inside of your tote and cut the lengths of durofoam using an exacto knife. Label your pieces like this as to not mix them up:

**F (floor)    LW( long wall) x2    SW (short wall) x2    C (ceiling)**

- 2) Cut your length of tubing using an exacto knife – 6 rings in length
- 3) Trace a 6" circle onto the front of the tote using the tubing as a template. Place the circle about two inches from the bottom of the tote (as in the picture above)
- 4) Cut out the circle using a jigsaw or circular saw
- 5) Place F (floor) into bottom of tote. \*Ensure that reflective side is face up (Photo 1)

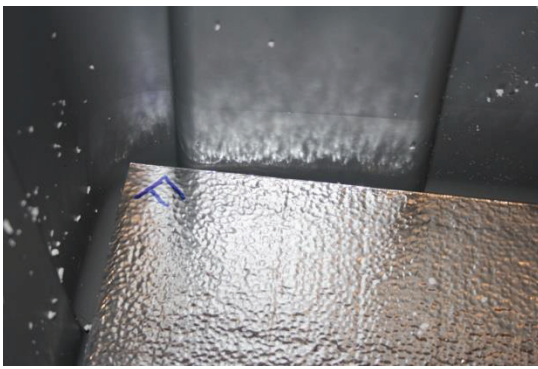


Photo 1

- 6) Place one LW (long wall) piece along each long wall of the inside of the tote. \*Ensure reflective side is facing inwards. \*\*Please note the pieces are slightly tapered-see photo 2 & 3 for placement.



Photo 2

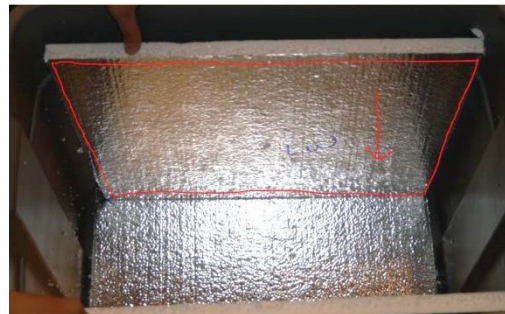


Photo 3

- 7) Place each SW (short walls) piece along each short wall of the inside of the tote. \*Ensure reflective side is facing inwards. \*\*Please note that the pieces are slightly tapered (see photos 4 & 5 below).

It is best to use a second set of hands, in order to keep the long pieces in place. Ensure that both SW pieces are **in the inside** of the LW pieces, as this will ensure a tight seal (see circled areas on photo 4)

**It is critical that all wall pieces are at the same level** once they are inserted. This will ensure a nice seal when the ceiling is placed at the end. If they are not level, it is better to pull the pieces up a little and have a gap at the bottom (you can double up the tape at the floor if needed)

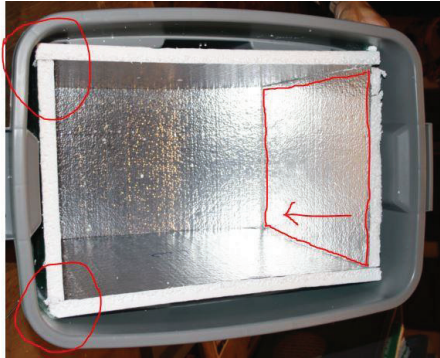


Photo 4



Photo 5

8) Using **grey duct tape**, secure **all wall seams from top to bottom** (see photo 6)

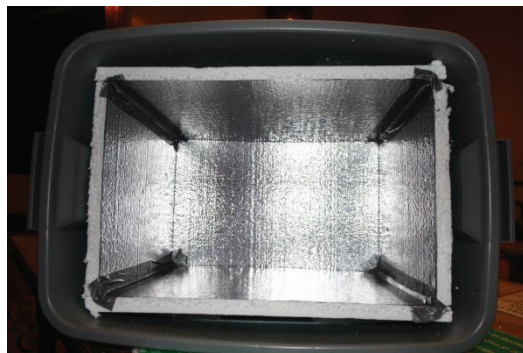


Photo 6

9) Continue using grey duct tape and secure **all floor seams and top portions of walls** (see photos 7 & 8)

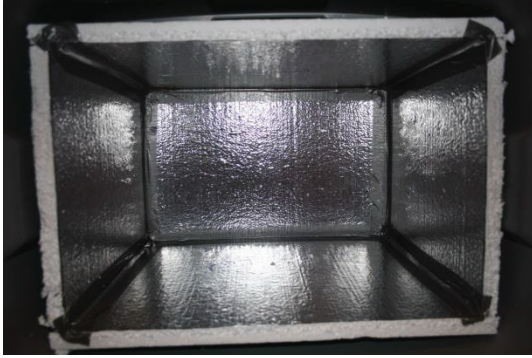


Photo 7



Photo 8

- 10) Continue using grey duct tape and tape around **entire perimeter of the C (ceiling) portion.** (see photo 9)

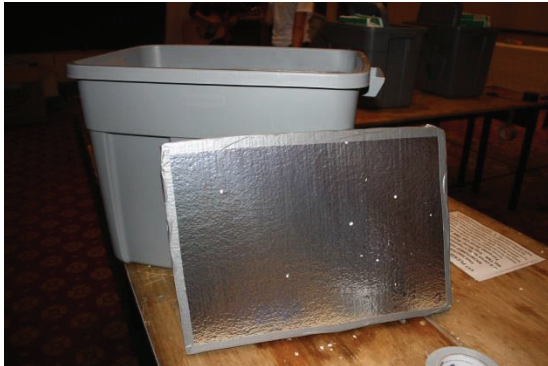


Photo 9

- 11) Using the exacto knife, carefully cut a hole through the durofoam using the pre cut hole in the tote as the stencil (see photo 10)



Photo 10

- 12) Take black tubing and insert it into the hole in tote. Ensure that **2 rings are located inside** the tote, and the remaining outside. (see photo 11)



Photo 11

- 13) Using an exacto knife and **black gorilla tape**, cut slices halfway through a strip of tape. Strips of tape should be approx. 6 inches long with slices every 2-3cm or so. Repeat this step several times. (see photo 12)



Photo 12

- 14) Take these pieces of black gorilla tape and tape around black tubing (**both inside and outside of the tote**). Place the **solid part of the tape** (the side that hasn't been cut) onto the tubing and use the cut portion to fan out onto the durofoam wall and outside of tote. (see photos 13 & 14)



Photo 13 (Inside)



Photo 14

**PLEASE ENSURE ALL TAPE HAS BEEN FIRMLY PRESSED DOWN TO PROVIDE MAXIMUM CONTACT WITH FOAM OR PLASTIC**

15) Fill the tote about  $\frac{3}{4}$  full with straw – make sure it's straw and not hay. Straw is the best material to use that will not hold moisture. Straw is yellow and hay is greenish (see photo 15)



Photo 15

16) Place C (ceiling) into tote. **Ensure the reflective surface is facing inwards.** (see photo 16)



Photo 16

17) Place laminated signage onto lid of tote and secure using **2 strips of black gorilla tape.** (see photo 17)



Photo 17

18) Place lid onto tote.



**CONGRATS! YOU JUST SAVED A HOMELESS CATS' LIFE THIS WINTER!**